

Autorizzazione a contrarre e contestuale affidamento di un ecotomografo destinato al Distretto di Sassari dell'ASL n°1 di Sassari, in modalità di acquisto ai sensi dell'art. 50, comma 1 lett. b. del D.Lgs. 36/2023.- CIG: B8F9E409C9.

Decimomannu 29/10/2025

Spett.le ASL 1 Sassari  
Via Alceo Catalocchino 9  
07100 Sassari

Siamo lieti di offrire, come da accordi, la sotto dettagliata offerta per l'ecografo nuovo **Samsung V8**, unità base composta da:

- Monitor 23,8" LCD Wide a tecnologia LED
- Touch Screen da 14" a tecnologia LED
- 4 Porte Attive per trasduttori imaging (non pencil)
- 6 Porta Sonde
- Memoria Integrata di tipo SSD
- Porte USB
- Tastiera Fisica
- Crystal Architecture™ (Massive Parallel Beam)
- Software di 2° Armonica Tissutale
- Pulse Inversion Harmonic Imaging
- Color Doppler
- Doppler PW
- Power Doppler
- S-Flow (algoritmo di miglioramento risoluzione Power Doppler)
- Quick Scan™ (funzione di ottimizzazione automatica dell'immagine ecografica)
- SonoView™ (software archivio immagini)
- MultiVision™ (Spatial Compound Imaging)
- ClearVision™ (algoritmo di riduzione rumore)
- HQ Vision™ (imaging dei dettagli ad alta risoluzione)
- ShadowHDR™ (HDR per la compensazione delle ombre)

Completo di:

- sonda convex multifrequenza 1-7 MHz applicazioni addominali, ginecologiche ed ostetriche
- sonda lineare multifrequenza 2-9 MHz applicazioni vascolari
- sonda cardiologica multifrequenza 1-5 MHz per applicazioni cardiologiche adulti
- software MV Flow, Lumi Flow, Dicom e misure cardiologiche
- stampante termica Sony B/N digitale

**Prezzo a Voi riservato euro 39.800,00 + IVA 5%**

**Garanzia 24 mesi**

### **Condizioni pagamento**

Pagamento 60 gg data fattura e positivo collaudo.

### **Installazione, collaudo e training**

A Nostro carico, da parte di tecnico in loco.

### **Consegna**

Entro e non prima del mese di gennaio 2026 causa tempi di approvvigionamento merce da Casa Madre.



CRISTINA MENGHINI  
29/10/2025 10:50:04 UTC+0100

Codice SDI XL13LG4  
PARTITA IVA 01676570904  
Via Nazionale 107, 09033 Decimomannu

### Offerta Economica relativa a

**Descrizione** affidamento di un ecotomografo destinato al Distretto di Sassari dell'ASL n° 1 di Sassari, in modalità di acquisto ai sensi dell'art. 50, comma 1 lett. b. del D.Lgs. 36/2023.

**RdO nr.** 5752001

**Numero lotto** 0

### Amministrazione titolare del procedimento

<b>Ente acquirente</b>	AZIENDA SOCIO SANITARIA LOCALE - 1 - DI SASSARI		
<b>Ufficio</b>	SC Flussi Informativi e Tecnologie sanitarie		
<b>Codice fiscale</b>	02884000908	<b>Codice univoco ufficio</b>	Non presente
<b>Indirizzo sede</b>	Via enrico costa 57		
<b>Città</b>	Sassari		
<b>Recapito telefonico</b>	+393123456789		
<b>Email</b>	acquisti.tecnologiesanitarie@aslsassari.it		
<b>Punto ordinante</b>	GIANFRANCO PAZZOLA		

### Concorrente

#### Forma di partecipazione

Singolo operatore economico

#### Ragione sociale/Denominazione

FARMA-CI

Partita IVA

01676570904

#### Tipologia societaria

Società in accomandita semplice (SAS)

### Oggetto dell'Offerta

**Formulazione dell'Offerta Economica =** Valore economico (Euro)

Nome	Valore
Valore offerto	39800,00

**Il Concorrente, nell'accettare tutte le condizioni specificate nella documentazione del procedimento, altresì dichiara:**

- che la presente offerta è irrevocabile ed impegnativa sino al termine di conclusione del procedimento, così come previsto nella lex specialis;
- che la presente offerta non vincolerà in alcun modo la Stazione Appaltante/Ente Committente;
- di aver preso visione ed incondizionata accettazione delle clausole e condizioni riportate nel Capitolato Tecnico e nella documentazione di Gara, nonché di quanto contenuto nel Capitolato d'oneri/Disciplinare di gara e, comunque, di aver preso cognizione di tutte le circostanze generali e speciali che possono interessare l'esecuzione di tutte le prestazioni oggetto del Contratto e che di tali circostanze ha tenuto conto nella determinazione dei prezzi richiesti e offerti, ritenuti remunerativi;
- di non eccepire, durante l'esecuzione del Contratto, la mancata conoscenza di condizioni o la sopravvenienza di elementi non valutati o non considerati, salvo che tali elementi si configurino come cause di forza maggiore contemplate dal codice civile e non escluse da altre norme di legge e/o dalla documentazione di gara;
- che i prezzi/sconti offerti sono onnicomprensivi di quanto previsto negli atti di gara;
- che i termini stabiliti nel Contratto e/o nel Capitolato Tecnico relativi ai tempi di esecuzione delle prestazioni sono da considerarsi a tutti gli effetti termini essenziali ai sensi e per gli effetti dell'articolo 1457 cod. civ.;
- che il Capitolato Tecnico, così come gli altri atti di gara, ivi compreso quanto stabilito relativamente alle modalità di esecuzione contrattuali, costituiranno parte integrante e sostanziale del contratto che verrà stipulato con la stazione appaltante/ente committente.

**ATTENZIONE: QUESTO DOCUMENTO NON HA VALORE SE PRIVO DELLA SOTTOSCRIZIONE A MEZZO FIRMA DIGITALE**

SISTEMI DI E-PROCUREMENT



Scan code or visit  
[samsunghealthcare.com](https://samsunghealthcare.com)  
to learn more

# V8

## Step up confidence





# Unifying performance and intelligence

The V8 ultrasound system combines exquisite imaging quality powered by Crystal Architecture™ with efficient, streamlined examination enabled by Intelligent Assist tools, and reengineered workflow to fulfill the needs of today's busy clinical environment. The sophisticated, ergonomic design showcases Samsung's careful craftsmanship and that comfort-in-use is a high priority for your product experience. We constantly seek new ways to help professionals obtain reliable answers with greater image clarity, enhanced accuracy, and improved work efficiency.

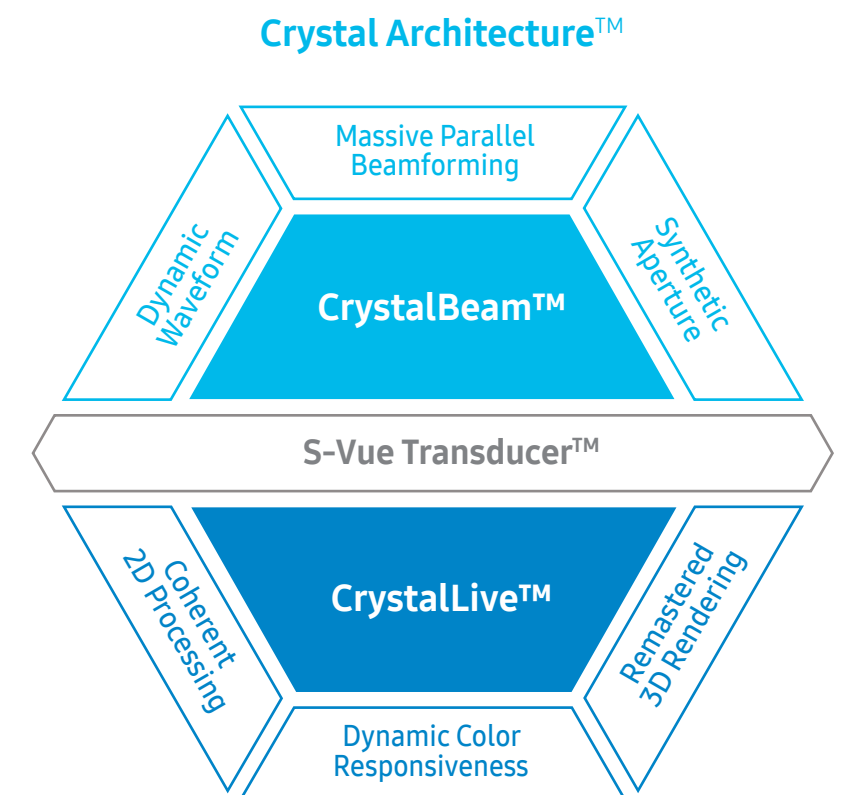


Scan here to watch the V8 product video



## Redefined imaging technologies powered by Crystal Architecture™

Crystal Architecture™, an imaging architecture that combines CrystalBeam™ and CrystalLive™, based upon S-Vue Transducer™, provides a crystal clear image. CrystalBeam™ is a new beamforming technology beneficial in delivering high-quality image resolution and increased uniformity of images. CrystalLive™ is Samsung's up-to-date ultrasound imaging engine with enhanced 2D image processing, 3D rendering and color signal processing, to offer outstanding image performance and efficient workflow during complex cases.





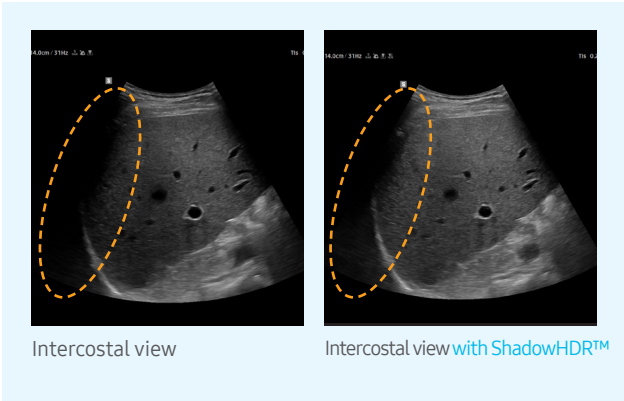
# Exquisite imaging quality for reliability and confidence


Gain insight into the problem based on exceptional image performance powered by Samsung’s core imaging engine, Crystal Architecture™. The premium imaging engine combines the benefits of enhanced 2D image processing and detailed expression of color signal processing.



## Enhance hidden structures in shadowed regions

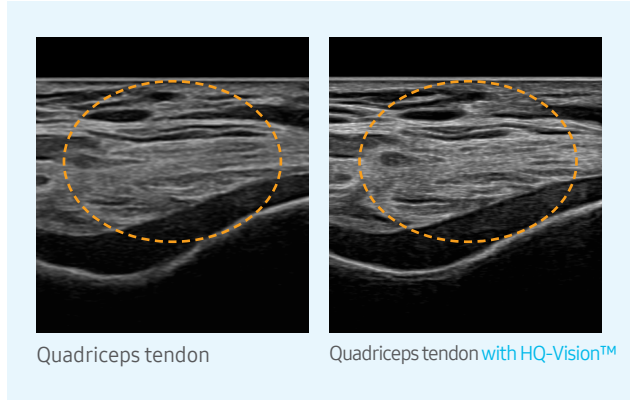
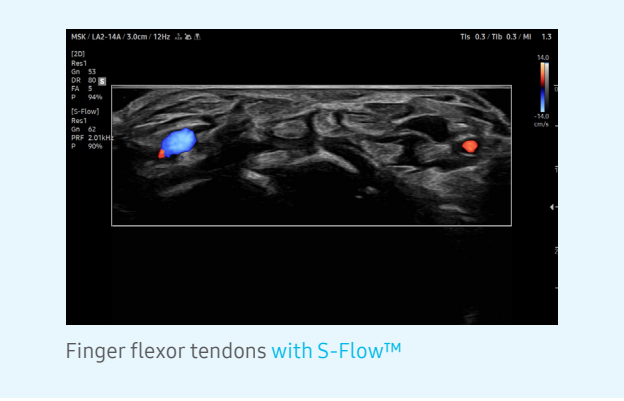
**ShadowHDR™** selectively applies high-frequency and low-frequency of the ultrasound to identify shadow areas such as fetal head or spine where attenuation occurs.






## Examine peripheral vessels with directional Power Doppler

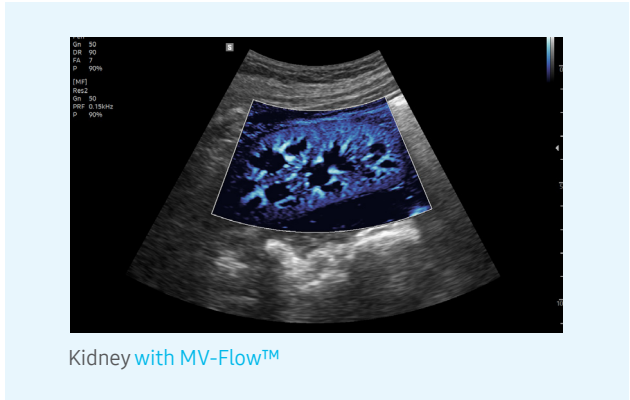
**S-Flow™**, a directional Power Doppler imaging technology, can help to detect even the peripheral blood vessels. It enables accurate diagnosis when the blood flow examination is especially difficult.





## Clean up blurry areas in the image


**HQ-Vision™<sup>1</sup>** provides clearer images by mitigating the characteristics of ultrasound images that are slightly blurred than the actual vision.





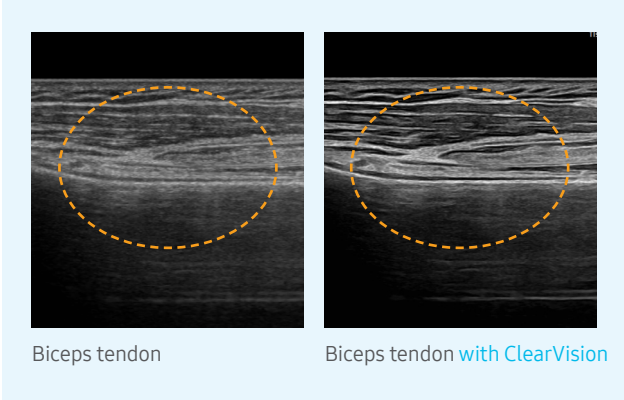
## Visualize slow flow in microvascular structures


**MV-Flow™<sup>1</sup>** offers an advanced color imaging for visualizing slow flow of microvascularized structures. High frame rates and advanced filtering enable MV-Flow™ to provide a detailed view of blood flow in relation to surrounding tissue or pathology with enhanced spatial resolution.



## Reduce noise to improve 2D image quality

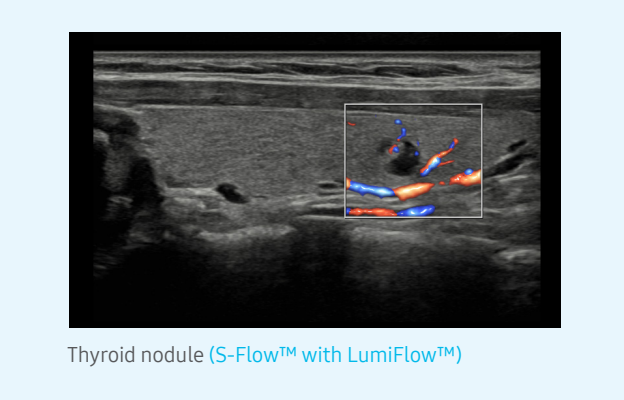
The noise reduction filter enhances the edge contrast and creates sharp 2D images for optimal diagnostic performance. In addition, **ClearVision** provides application-specific optimization and advanced temporal resolution in live scan mode.





## Show blood flow in vessels in a 3D like display

**LumiFlow™<sup>1</sup>** is a function that visualizes blood flow in three dimensional-like to help understand the structure of blood flow and small vessels intuitively.



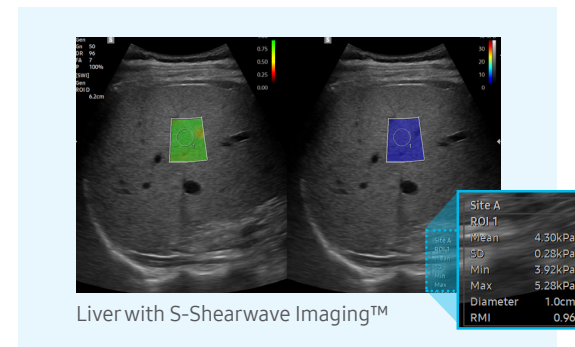


## Intelligent Assist tools for efficient examination

Simplify operation and enhance diagnostic confidence with built-in Intelligent Assist features. V8 supports healthcare professionals with semi-automated features they need to help making decisions. The system is equipped with a range of tools that help accurately diagnose issues and achieve greater throughput.

## Display and quantify tissue stiffness in a non-invasive method

**S-Shearwave Imaging™**<sup>1</sup> allows for non-invasive assessment of stiff tissues in various applications. The color-coded elastogram, quantitative measurements, display options, and user-selectable ROI functions are especially useful for accurate diagnosis of breast and liver diseases.



## Perform multi-modality fusion biopsies with high precision

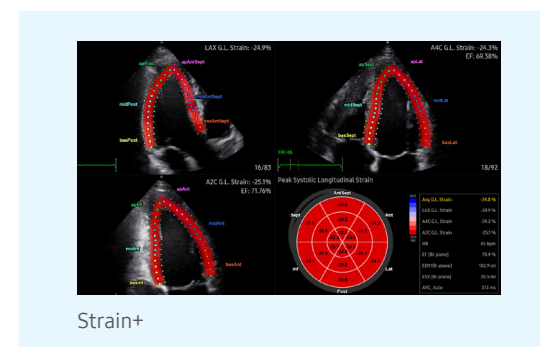
**S-Fusion™**<sup>1</sup> enables simultaneous localization of a lesion using real-time ultrasound with other volumetric imaging modalities, enabling accurate targeting during interventional and other advanced clinical procedures. Samsung's new Auto Registration helps quickly and precisely fuse the images for increased efficiency.

## Contrast Enhanced Ultrasound

CEUS+<sup>1</sup> is a contrast enhancement imaging technology that utilizes the characteristics of ultrasound contrast agents. The microbubble contrast agent injected into the body through the vein or alike is subjected to perform nonlinear resonance due to stimulation of ultrasound energy. In addition to the nonlinear signal generated by this method, the ultrasound contrast image is implemented by using the harmonic signal and thus utilized for the diagnosis based on the contrast characteristics over time.

## Quantify wall motion of the left ventricle

**Strain+**<sup>1</sup> is a quantitative tool for measuring global and segmental wall motion of the left ventricle (LV). In Strain+, three standard LV views and a Bull's Eye are displayed in a quad screen for easy and quick assessment of the LV function.

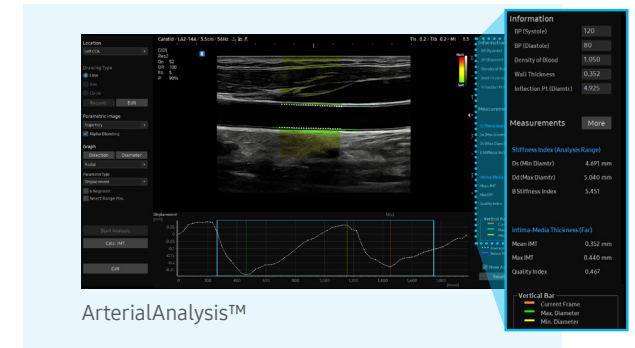


Score and report wall motion to determine heart and blood vessel function

**StressEcho**<sup>1</sup> package includes wall motion scoring and reporting. It includes exercise StressEcho, pharmacologic StressEcho, diastolic StressEcho and programmable StressEcho.

## Detect functional changes of cardiovascular vessels


**ArterialAnalysis™**<sup>1</sup> detects functional changes of vessels, providing measurement values such as the stiffness, intima-media thickness and pulse wave velocity of the common carotid artery. Since the functional changes occur before morphological changes, this technology supports the early detection of cardiovascular disease.

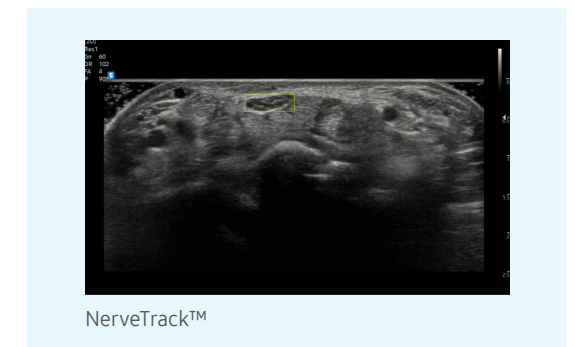


## Measure IMT in one click

**AutoIMT+**<sup>1</sup> is a screening tool to analyze a patient's potential risk of cardiovascular disease. It allows easy intima-media thickness measurement of both the anterior and posterior wall of the common carotid by the click of a button.

## Detect and track nerves with AI technology


 **NerveTrack™** <sup>1</sup> is a function that detects and provides information of the location of nerve area in real-time during ultrasound scanning.



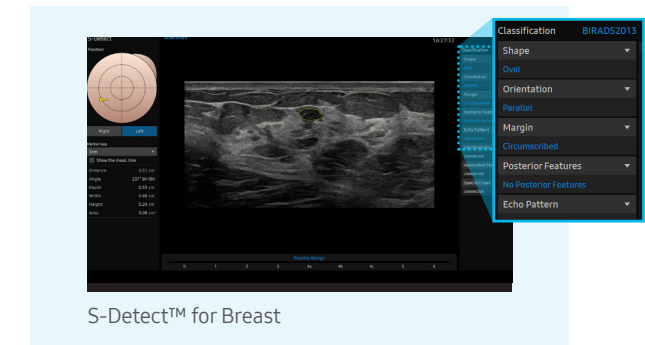
### Display needle tip clearly

With pinpoint precision, **NeedleMate+™**<sup>1</sup> delineates needle location when performing interventions such as nerve blocks. Improved accuracy and efficiency in procedure are possible with beam steering added to NeedleMate+™.


### Analyze selected breast lesions and report breast assessment

 **S-Detect™ for Breast**<sup>1,4</sup>, which analyzes selected lesions in the breast ultrasound study and shows the analysis data, applies BI-RADS ATLAS\* (Breast Imaging-Reporting and Data System, Atlas) to provide standardized reporting; and helps diagnosis with the streamlined workflow.

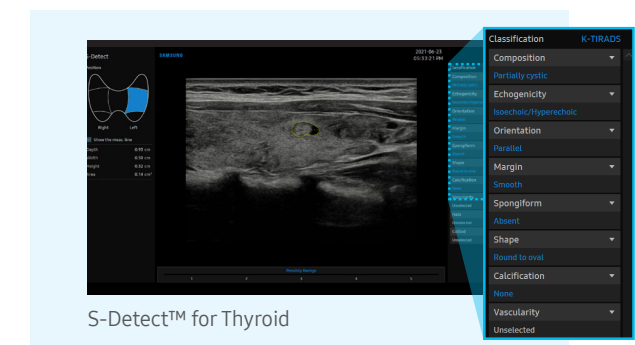
\* It is a registered trademark of ACR and all rights reserved by ACR.



## Analyze selected thyroid lesions and report thyroid assessment

 **S-Detect™ for Thyroid**<sup>1,4</sup>, which analyzes selected lesions in the thyroid ultrasound study and shows the analysis data, provides standardized reporting based on the ATA, BTA, EU-TIRADS and K-TIRADS\* guidelines; and helps diagnosis with the streamlined workflow.

\* ATA: American Thyroid Association  
BTA: British Thyroid Association  
EU-TIRADS: European Thyroid Imaging Reporting and Data System  
K-TIRADS: Korean Thyroid Imaging Reporting and Data System

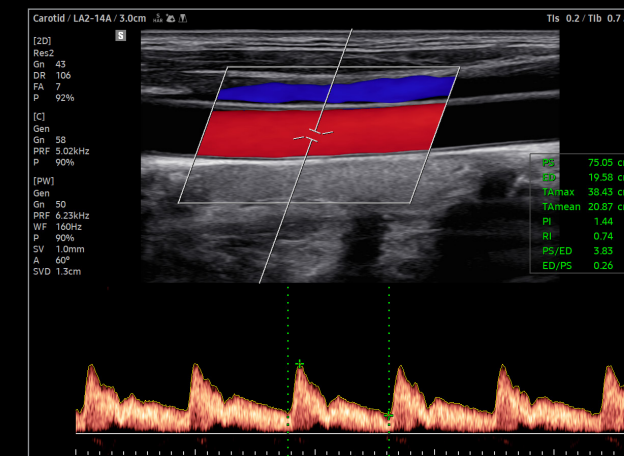


# Feature-rich capabilities for diverse clinical cases

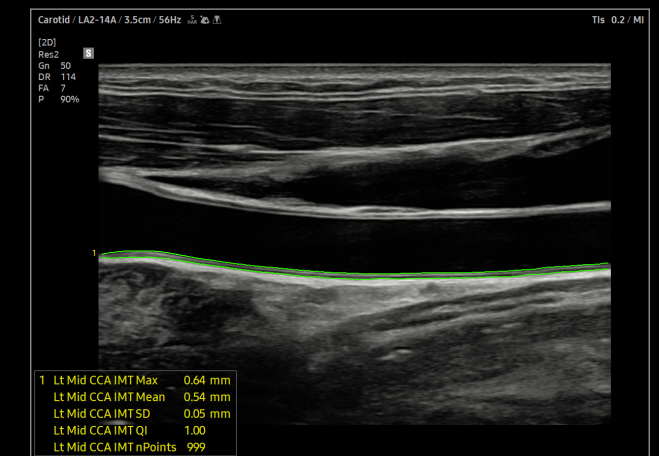
V8 includes a range of tools for diverse clinical cases and patient types. The highly adaptable system with high-precision features helps healthcare professionals effectively perform targeted examinations.



Scan here to watch the V8 image gallery



Common carotid artery Doppler



AutoIMT+



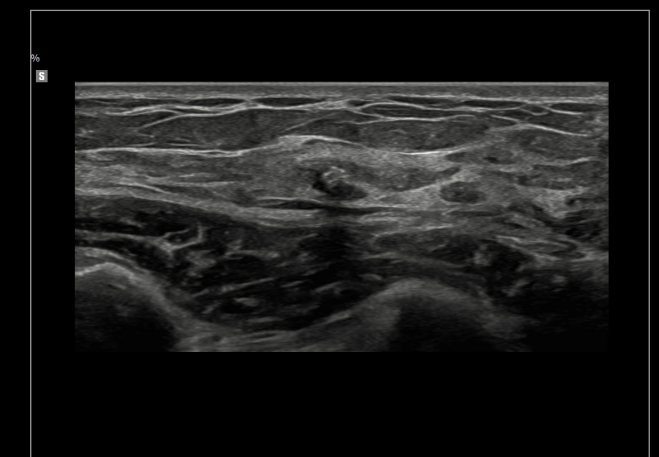
S-Shearwave imaging™ for liver



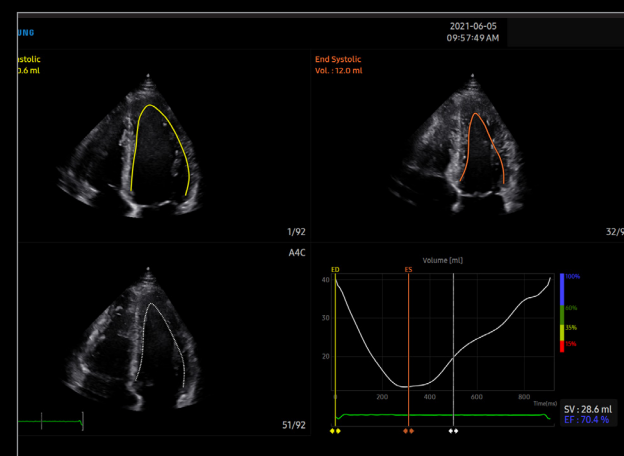
Hepatic vein with S-Harmonic™



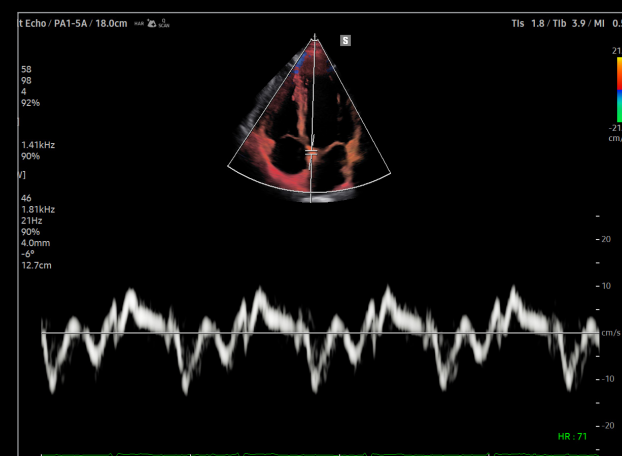
Thyroid with trapezoidal imaging



Calcification in breast tissue



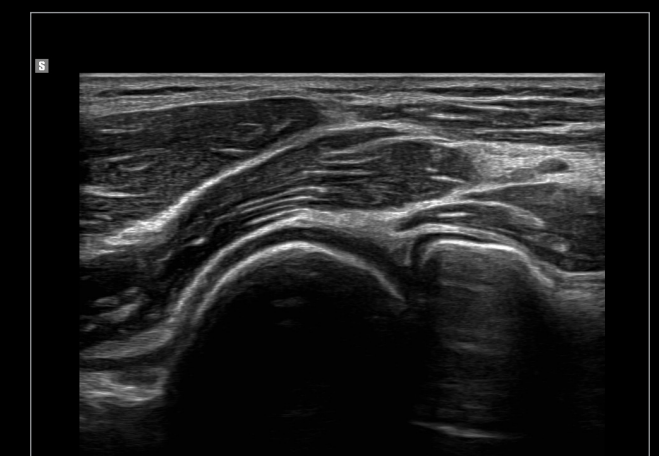
AutoEF



Tissue Doppler



Flexor pollicis longus tendon with ClearVision



Elbow with HQ-Vision™

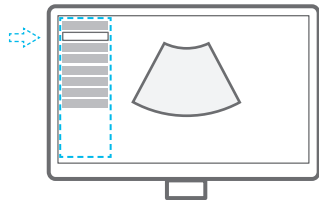


# Reengineered workflow and design for simplified process

Ease your day by streamlining workflow with V8's convenient features that reduce multiple tasks into just a few steps and keystrokes. How we display the scan data more easily and precisely is an important focus for the user experience. The ergonomic design makes effective use of the user's working environment to assure utility.

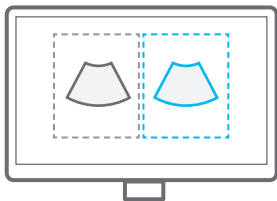
## Build predefined protocols for streamlined process

**EzExam™** assign protocols for examinations that are regularly performed in the hospital in order to reduce the number of steps that you have to go through.



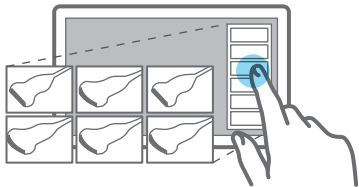
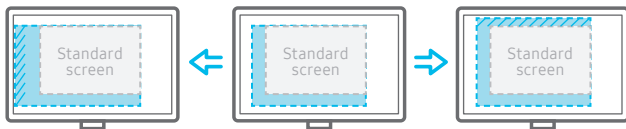
## Compare previous and current exam in a side-by-side display

**EzCompare™** automatically matches the image settings, annotations, and bodymarkers from the prior study.



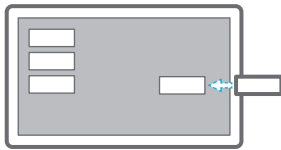
## See images in expanded view

The ultrasound examination can be performed while viewing the images and cines that are expanded at various ratios according to the user preference.



## Select transducer and preset combinations in one click

**QuickPreset** allows the user to select the most common transducer and preset combinations in one click.



## Customize frequently used functions on the touchscreen

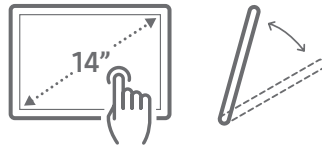
**TouchEdit**, a customizable touchscreen, allows the user to move frequently used functions to the first page.



Access directly to RIS from the system

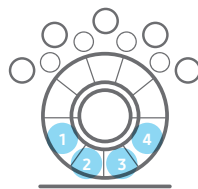
## Access to RIS from the browser of the ultrasound system

**RIS Browser** is a function that improves the workflow in the hospital by allowing access to RIS through the browser embedded in the system for the post process without any need to move to the PC after scanning.



## 1 14 inch tilting touch screen

Samsung's tilting touch screen can be adjusted to accommodate user's viewing preferences in any scanning environment.



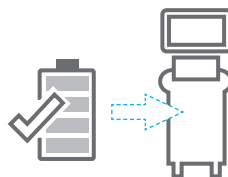
## 2 Assign functions to the buttons near the trackball

Depending on the ultrasound inspection items, the functions assigned to the buttons around the trackball can be utilized to reduce the hassle of menu selection.



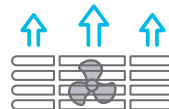
## 3 Save image data directly to USB memory

**QuickSave** function allows image data to be saved directly on USB memory during the exam.



## 4 Use the system when AC power is temporarily unavailable

**BatteryAssist™** provides battery power to the system, enabling users to perform scans when AC power is temporarily unavailable. It also allows to transport the ultrasound system to another location and start to scan right away.



## 5 Effective cooling system

An effective airflow system cools down the ultrasound system by constantly letting heat out and reducing fan noise.



# Comprehensive selection of transducers

## Curved array transducers



### CA1-7S

Abdomen, Obstetrics, Gynecology, Pediatric, Musculoskeletal, Vascular, Urology, Thoracic



### CA3-10A

Abdomen, Obstetrics, Gynecology, Pediatric, Musculoskeletal, Vascular, Urology, Thoracic



### PA1-5A

Cardiac, Vascular, Abdomen, Pediatric, TCD, Thoracic



CRISTINA MENGHINI

29/10/2025 10:56:32 UTC+0100

## Linear array transducers



### LA2-14A

Small parts, Vascular, Musculoskeletal, Abdomen, Pediatric, Thoracic



### LA4-18A

Small parts, Vascular, Musculoskeletal, Abdomen, Pediatric



### LA2-9A

Small parts, Vascular, Musculoskeletal, Abdomen, Pediatric



### EA2-11AR

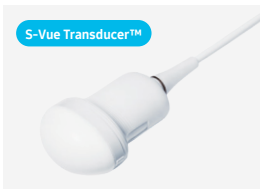
Obstetrics, Gynecology, Urology



### EA2-11AV

Obstetrics, Gynecology, Urology

## Volume transducers



### CV1-8A

Abdomen, Obstetrics, Gynecology, Urology



### EV2-10A

Obstetrics, Gynecology, Urology



### DP2B

Cardiac, Vascular, TCD



### CW6.0

Cardiac, Vascular, TCD

\* This product, features, options, and transducers are not commercially available in all countries.

\* Sales and Shipments are effective only after the approval by the regulatory affairs.

Please contact your local sales representative for further details.

\* This product is a medical device, please read the user manual carefully before use.

1. Optional feature which may require additional purchase.

2. S-Vue Transducer™ is the name of Samsung's advanced transducer technology.

3. Strain value for ElastoScan+™ is not applicable in the United States and Canada.

4. Recommendations about whether results are benign or malignant in S-Detect™ are not applicable in the United States and Canada.

## SAMSUNG MEDISON CO., LTD.

© 2021 Samsung Medison All Rights Reserved.

Samsung Medison reserves the right to modify the design, packaging, specifications, and features shown herein, without prior notice or obligation.

CE 0123

## Samsung Healthcare Cybersecurity

To address the emerging need for cybersecurity, Samsung provides a solution to support our customers by offering the tools to protect against cyberthreats that may compromise invaluable patient data and ultimately degrade the quality of care.

